

Traditional Treatment – Display Sequence

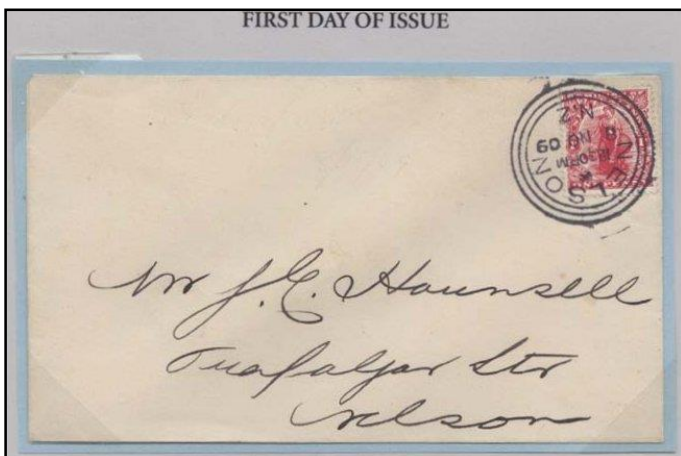
- Story begins for any issue (stamp or postal stationery) with pre-production material, if it exists, which includes:
 - Artist's sketches and essays
 - Die and plate proofs
 - Color trials
- Plate production and plate flaws.
- Varieties of material used in production (papers, gums, etc.).
- Printing inks and perforation varieties (and watermark varieties, if they exist).
- Plate and position blocks and other examples of production types.
- First Day or very early use.
- The use for which the stamp or postal stationery was intended.



Penny Dominion Die Proofs



Papers used in production of the Penny Dominion



First Day Cover



Booklet Pane Format



Penny Dominion overprinted “VICTORIA LAND”



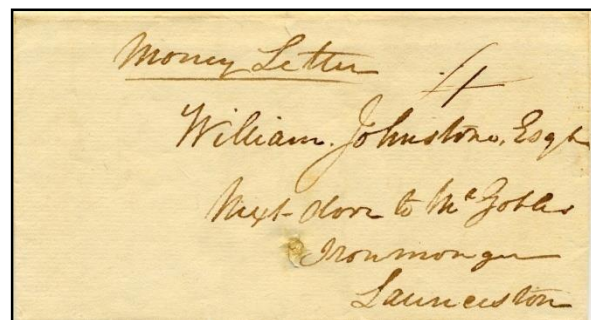
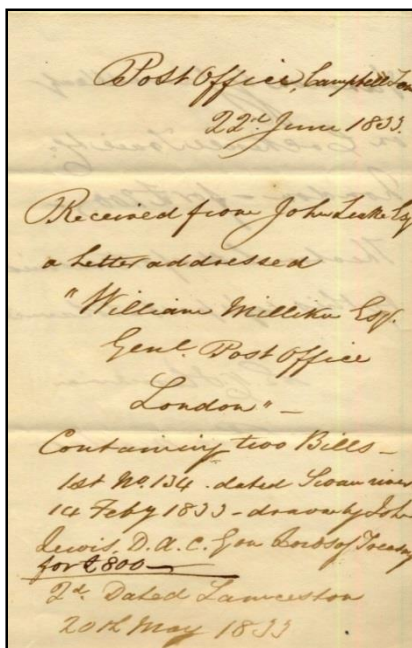
Penny Dominion Fiscal Use

Postal History Treatment – Display Sequence

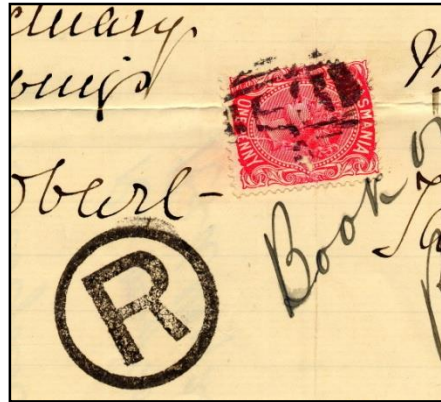
- Postal History exhibits focus on one of three primary aspects:
 - Rates
 - Routes
 - Postal Markings

Note: Treatment generally follows a postal historical timeline.

- Begin with the earliest possible example, or even a precursor used as a prolog, or explain what happened before the story begins.
- The exhibit follows a natural sequence to the conclusion of the story’s scope.
- An effective conclusion is a short epilog, or what happened after your story ends.



1833 Letter of receipt from the Postmaster for a patron sending valuables by post – a precursor to Tasmania’s Registered Mail system (item is on the Title Page)



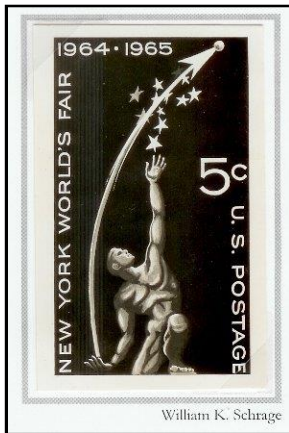
The exhibit proceeds with the Earliest Recorded Date for the manuscript marking “Money Letter” (1844)



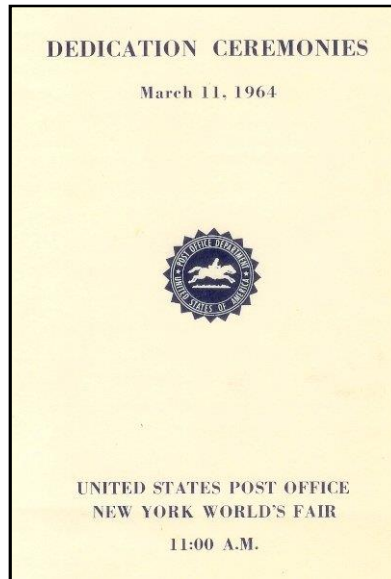
Followed by the evolution of rates, various registration etiquettes and markings used.

First Day Covers Treatment – Display Sequence

- FDC (postal) exhibits have similar elements of treatment as Traditional exhibits.
- In addition to pre-production material, official publicity announcements, Post Office communications and First Day of Issue ceremony programs (para-philatelic material) are shown.
- In the production section, there is more emphasis on material signed by the Postmaster General and those involved with design, plate production and printing.
- The exhibit focuses on types of FDC cancellations (unofficial and pre-release.
- A representative sample of cached First Day usage.
- A sample of exotic FDC usage.
- The use for which the stamp or postal stationery was intended.



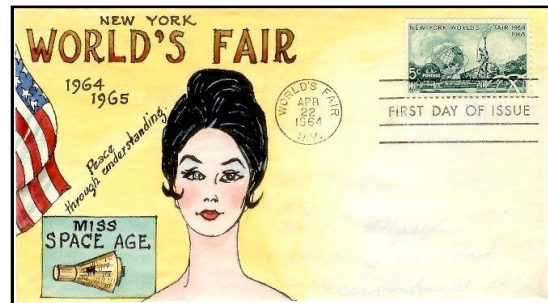
Photographic copy of an unadopted design essay



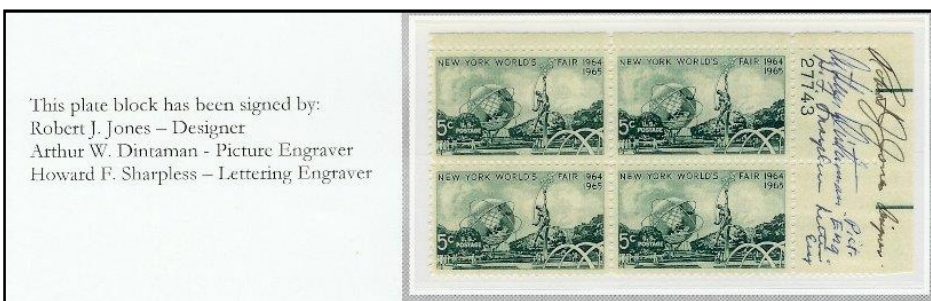
First Day Ceremony Program (left)



Official Post Office wall poster announcing the issue



Interesting FDCs



This plate block has been signed by:
Robert J. Jones – Designer
Arthur W. Dintaman - Picture Engraver
Howard F. Sharpless – Lettering Engraver

Plate block with signatures of Designer and Engravers